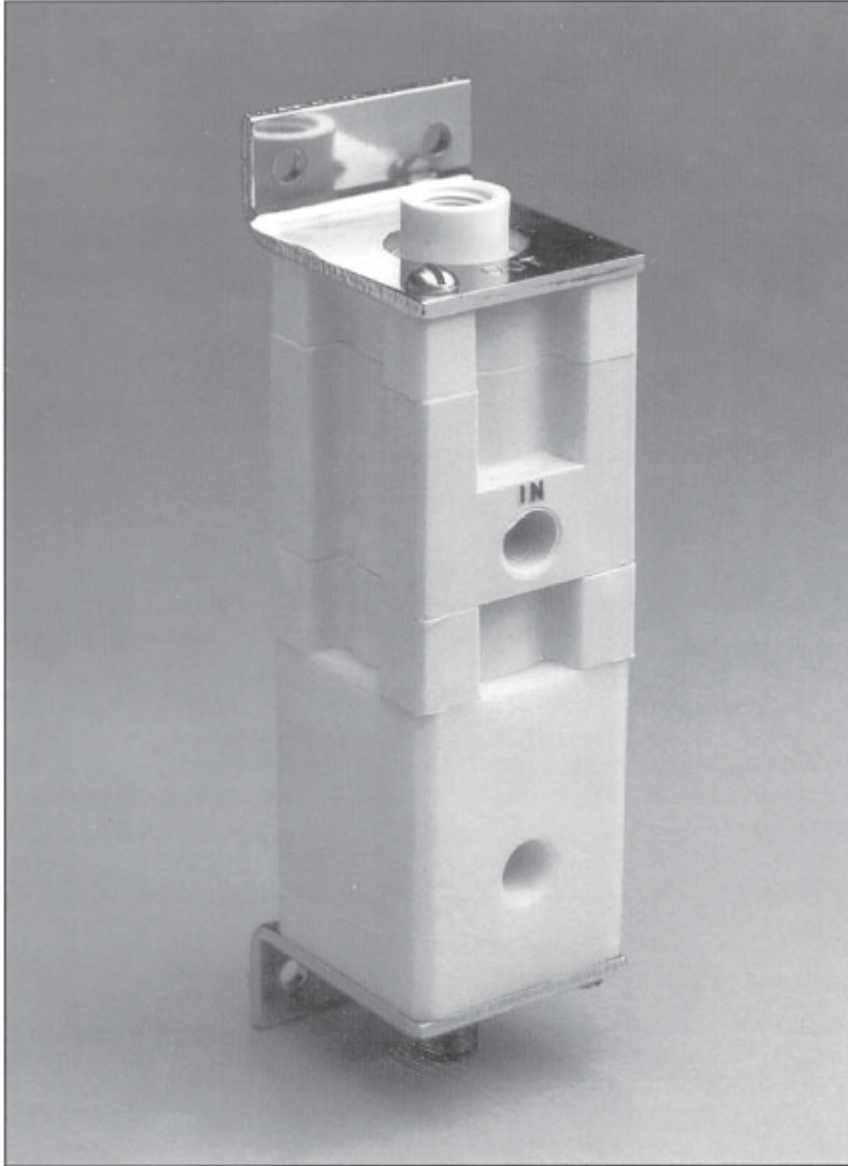


Dispensing Pump

High Purity, Pneumatic Operated, Piston Design
Model: SV673



INTRODUCTION

For over 25 years, Valcor Scientific, a Division of Valcor Engineering Corporation has designed and provided pneumatic operated pumps to handle high purity and aggressive media. The SV673 Series pumps are rugged, reliable, precision devices, capable of operating through one million cycles without the need of maintenance

Recommended for a wide range of liquid dispensing and metering applications, the SV673 Series offers distinct advantages over other pumps in terms of durability, cost, size and accuracy.

The SV673 pump provides an output range, graduating from 100 to 1500 microliters per dispense.

DESCRIPTION

The SV673 is a pneumatic activated piston-pump. As pressure is applied and released, a piston moves up and down to dispense liquids.

The SV673 pump employs Valcor's field-proven patented o-ring pump-ing system. This seals the piston while allowing the pump chamber to refill.

A flexible diaphragm isolates the liquid from any metal operating parts. Wetted surfaces are polypropylene and either Viton® or EPDM elastomers.

APPLICATIONS

The SV673 pump is well suited to applications requiring repeatable precision dispensing of small volumes over time to create a total volume of liquid.

This pump is designed for applications where liquids can be affected by or deteriorate metal in the fluid path, as in medical and hazardous environment applications.

Typical SV673 applications include:

Dispensing

- Adhesives
- Reagents in clinical instrumentation
- Diluent in analytic instrumentation
- Lubricants

Adding

- Syrup to carbonated water in soda machines
- Fragrance to personal products

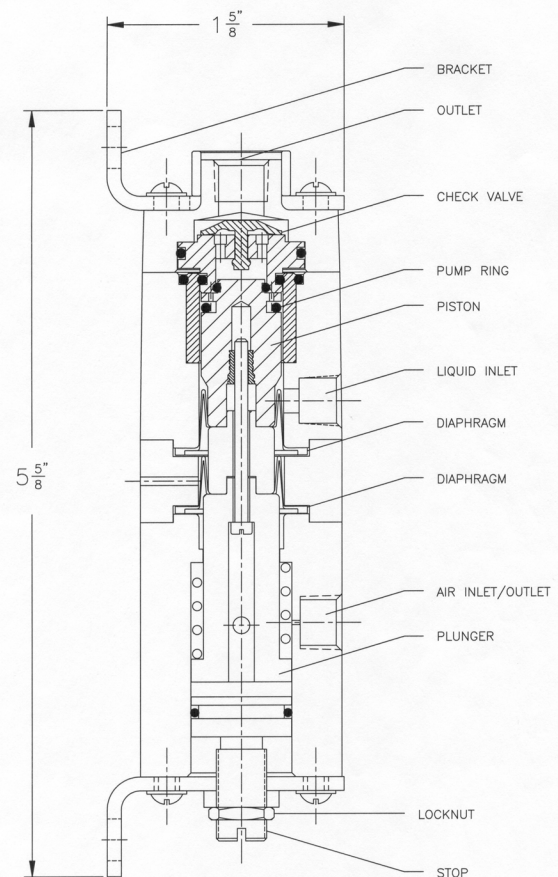
FEATURES

- Ideal dispensing/metering pump for use in hazardous environmental conditions where no electrical connections are permitted.
- Adjustability over a wide range of operating conditions is a function of two variables:
 - Volume output per stroke is adjustable mechanically by setting piston stroke (Adjustable screw)
 - Flow rate per minute is adjusted by frequency of pneumatic pulsing
- High precision, repeatability within 2%
- Self-priming, can start from dry condition and capable of lifting five feet of water
- Compact, smaller than peristaltic and syringe pumps
- Long life, operates over a million cycles without maintenance
- High viscosity compatibility, dispense liquids with viscosities as high as 10,000 centistokes
- Choice of elastomeric seal materials for application compatibility
- Custom mounting configurations available
- Custom inlet/outlet fittings available, including barb, lure and threaded
- Low cost, one of the most affordable high precision metering pumps
- Easily maintained, while designed to be maintenance free over a million cycles, refurbishment kits are available

PHYSICAL SPECIFICATIONS

Size: 5 5/8"H x 1 1/2"W x 1 5/8"D
Weight: 12.7 oz (360g)
Port Connection: 1/4" - 28 Thread
Min. Inlet Tube 1/8" I.D.
Wetted Surfaces: Polypropylene, glass & Viton® or EPDM seals
Actuation Pressure: 30 to 60 PSI Air
Output/Stroke: 100 to 1500 µl
Maximum Strokes/Min: 60 on H₂O
Maximum Dispensing Rate: 90cc/minute
Maximum In-Take Lift: 60" H₂O
Repeatability: +/-2%
Special Requirements: Consult Factory

MODEL: SV673



HOW TO ORDER

Select the voltage code and elastomer code from the table below. **Example:** SV673AP + [Elastomer Code] = SV673APV

Elastomer Code	
Viton® = V	EPDM = E

1

Valcor Scientific

Valcor Engineering Corporation®

2 Lawrence Road • Springfield, New Jersey 07081

973-467-8400 • Fax: 973-467-9592

<http://www.valcor.com>